





MASTER THE MOMENTS. Your daily commute, a night on the town, and weekend road trips. With Ford Edge, you've got the responsive power and advanced technology to make it all work for you. The experiences continually change. What really matters is the confidence to go. As well as the memory-making connections shared along the way. Life is a Sport. This is your Utility. Be Unstoppable. The 2017 Ford Edge.

Sport in Burgundy Velvet Metallic Tinted Clearcoat with available equipment.



POWERFUL CHOICES FOR YOU.



ENGINES

2.0L EcoBoost®

245 horsepower.¹ 275 lb.-ft. of torque.¹ This twin-scroll turbocharged, direct-injection engine, standard on SE, SEL and Titanium, has robust low-end torque and virtually no turbo lag. Plus, the paddle-shift technology of the 6-speed SelectShift® automatic transmission enhances the driving fun on all Edge models.

Fuel consumption ratings: 11.3L/100 km city and 8.0L/100 km hwy (25 mpg city/35 hwy).² FWD with Auto Start-Stop Technology

2.7L EcoBoost

315 horsepower.¹ 350 lb.-ft. of torque.¹ Standard on Edge Sport, this dynamic engine offers best-in-class³ gas V6 hp and torque. Control its twin-turbocharged, direct-injection power via your fingertips, thanks to racing-style paddle shifters.

Fuel consumption ratings: 13.8L/100 km city and 9.8L/100 km hwy (20 mpg city/29 hwy).² AWD

3.5L Ti-VCT⁴

280 horsepower. 250 lb.-ft. of torque. Twin independent variable camshaft timing (Ti-VCT) helps the 3.5L engine deliver robust horsepower without sacrificing efficiency. By allowing intake and exhaust valves to adjust independently for precise valve timing control, Ti-VCT helps optimize performance on every drive. This proven performer is available on SEL and Titanium.

Fuel consumption ratings: 13.5L/100 km city and 9.1L/100 km hwy (21 mpg city/31 hwy).² FWD



AUTO START-STOP TECHNOLOGY⁵ can help reduce fuel consumption and vehicle emissions during stop-and-go city driving. The system can shut off the engine when you come to a complete stop, and seamlessly restart it when you release the brake pedal.

Titanium in Blue Jeans Metallic with available equipment. ¹Horsepower and torque ratings achieved with 93-octane fuel. ²Fuel consumption ratings based on Government of Canada approved test methods. Actual fuel consumption will vary for all ratings. ³Class is Midsize Utilities, non-diesel, based on Ford segmentation. ⁴Available feature. ⁵Available on SE FWD models only.

LIFE ON THE EDGE.



Undeniably athletic, the 2017 Ford Edge asserts its presence with a striking stance across its lineup – SE, SEL, Titanium and the performance-oriented Sport. Experience luxurious accommodations for 5, paired with a smooth, quiet ride and precise handling. Plus, driver-assist technologies¹ help enhance its prowess – and yours.



Edge Sport, with its distinctive look, provides exceptional road-handling capability with a uniquely sport-tuned, 4-wheel independent suspension. Standard all-wheel drive (AWD) delivers enhanced handling and maximized traction. Edge Sport. Dressed and always ready to play.



Sport in White Platinum Metallic Tri-coat with available equipment. ¹Available feature.

DEP
DEALER ePROCESS



SYNC 3

In addition to all the voice-activated benefits of SYNC® – placing and answering calls, and controlling music from your devices – you'll love the easy-to-use interface of SYNC 3.^{1,2} An 8" colour LCD screen displays phone, audio and navigation¹ features. Enhanced voice recognition lets you give simple commands. A capacitive touchscreen includes a convenient swipe feature, as well as pinch-to-zoom functionality within navigation. SYNC 3 also brings you the options of Apple CarPlay^{TM3} and Android Auto.^{TM4}

¹Available feature. ²Don't drive while distracted. Use voice-operated systems when possible; don't use handheld devices while driving. Some features may be locked out while the vehicle is in motion. Not all features are compatible with all phones. Message and data rates may apply. SYNC voice recognition and screens available in English, French and Spanish. ³Requires phone with compatible version of Apple iOS and active data service. SYNC does not control Apple CarPlay while in use. Apple is solely responsible for their functionality. Message and data rates may apply. ⁴Requires phone with compatible version of Android Auto and active data service. SYNC does not control Android Auto while in use. Google

Voice-Activated Navigation System

Find your destination easily with help from the voice-activated Navigation System.¹ Zoom and scroll through interactive maps complete with available 3-D mapping and receive voice-guided turn-by-turn directions. Easy destination entry helps you locate your favourite restaurants, nearest ATM, closest fuel station and more.

SYNC AppLink

Use your voice to control select compatible mobile apps, thanks to standard SYNC AppLink.^{TM5}

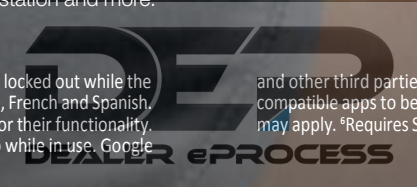
and other third parties are responsible for their functionality. Message and data rates may apply. ⁵SYNC AppLink is compatible with select smartphone platforms and requires compatible apps to be installed and running on a capable smartphone while connected to SYNC. Commands may vary by phone and AppLink software. Message and data rates may apply. ⁶Requires SYNC 3. ⁷Optional Navigation System map updates cannot be received via Wi-Fi and require a separate update. Data rates may apply.

Siri Seamless Integration

Bring the power of Siri® into Edge with Siri Eyes Free,⁶ your paired iPhone® and a long press of the voice recognition button on the steering wheel.

Automatic Updates Over Wi-Fi

Keep SYNC 3 current with the latest software as new updates become available.⁷ All you need is a Wi-Fi® connection.





SOPHISTICATION AND CRAFTSMANSHIP COME TOGETHER HERE. No matter your destination or travelling companions, the 2017 Ford Edge is designed to indulge, pamper and please. Its finely crafted interior offers you a heated steering wheel,¹ 10-way power heated and cooled front seats,¹ and the assurance that you arrive comfortably in control – whether you're the driver or a passenger.

To keep everyone entertained along the way, Edge offers an exceptional 12-speaker Audio System from Sony^{B1} teamed with HD Radio™ Technology.^{1,2} Edge is designed to enhance your travels – it hits all the right notes.

Titanium leather-trimmed interior in Ceramic with perforated inserts and available equipment. ¹Available feature. ²HD Radio reception may not be available in all areas. ³SiriusXM subscriptions sold after 6-month prepaid period expires. Subscriptions are governed by SiriusXM Customer Agreement; see siriusxm.ca. Data rates may apply.



SiriusXM¹

Listen to your favourites all across Canada. Your 6-month prepaid subscription gets you the best in audio entertainment including 100% commercial-free music from every genre, world-class news, sports, comedy and entertainment. Plus, listen anywhere online and on the SiriusXM[®] app.³



PREVAIL OVER PARKING LOTS. With help from its Enhanced Active Park Assist System,¹ Edge makes parking easy so you can move on to more important things. Whether you're backing into a perpendicular spot or slowing down to parallel park, ultrasonic sensors can identify a parking space that is the right size, then the system steers the vehicle into it. All you do is follow on-screen prompts, and operate the accelerator, brake and gear shifter as needed. The front 180-degree camera¹ also helps out with visibility and allows you to see around corners. A spritz of the lens washer and your view is clear. Ford Edge has mastered the parking lot. Time to get out and have some fun.

Titanium in Burgundy Velvet Metallic Tinted Clearcoat with available equipment. Driver-assist features are supplemental and do not replace the driver's attention, judgment and need to control the vehicle. ¹Available feature.

Foot-Activated Hands-Free Power Liftgate

When you have an impressive 2,078 litres (73.4 cu. ft.) of cargo space with the rear 60/40 split seat folded flat, there's a good chance your hands are going to be full when you're loading the cargo area. So with the Intelligent Access key fob on you, just kick your foot under the rear bumper and let the foot-activated hands-free power liftgate¹ do the work. Another kick, and the liftgate closes. No hands required.





BE PREPARED FOR THE UNEXPECTED.

Adaptive Cruise Control

Helps maintain your choice of speed and preset gaps from the vehicle in front of you. It can also alert you to a potential frontal collision. If one is detected, adaptive cruise control & forward collision warning with brake support¹ flashes a warning via a heads-up display on the windshield, sounds an alarm, and can pre-charge the brake system to provide full responsiveness when you do brake.

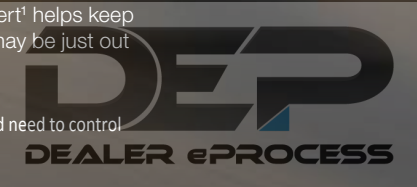
Lane-Keeping System

Can detect lane markings and apply torque to the steering wheel if it senses your vehicle drifting unintentionally out of its lane. If needed, the Lane-Keeping System¹ can also send gentle vibration pulses to the wheel to prompt you to steer back toward centre.² A Driver Alert System¹ also monitors your driving behaviour – including the crossing of lane markings and other factors – and warns you in the message centre if you could use a break from driving.

BLIS (Blind Spot Information System)

Notifies you with a light in either sideview mirror³ if its radar sensors detect a vehicle in the corresponding blind spot. Cross-traffic alert, part of the system, warns you with a beep and a warning light in your sideview mirror if it detects a vehicle approaching either side as you slowly back Edge out of a parking space. Either way, BLIS[®] with cross-traffic alert¹ helps keep you aware of things that may be just out of your line of sight.

Titanium in Blue Jeans Metallic with available equipment. Driver-assist features are supplemental and do not replace the driver's attention, judgment and need to control the vehicle. ¹Available feature. ²Lane-Keeping System does not control steering. ³BLIS replaces standard integrated blind spot mirrors.



Cold Weather Package

As usual this year, winter is expected all across Canada. So be ready for the snow and ice with the Cold Weather Package.¹ It includes a leather-wrapped heated steering wheel, and front and rear floor liners. With heated front seats standard on SEL, Titanium and Sport, you'll be well-equipped for winter's wrath.

MODELS

SE



18" Sparkle Silver-Painted Aluminum
Standard: SE



18" Sparkle-Silver Painted Split-Spoke Aluminum
Standard: SEL

SEL



18" Polished Aluminum
Optional: SEL



19" Nickel-Painted Aluminum
Standard: Titanium

TITANIUM



20" Polished Aluminum with Dark Stainless-Painted Pockets
Optional: Titanium



20" Premium Polished Aluminum
Optional: Titanium

SPORT



20" Polished Aluminum with Low-Gloss Magnetic-Painted Pockets
Standard: Sport



21" Premium Tarnished Dark-Painted Aluminum
Optional: Sport

STANDARD FEATURES

Mechanical

- 6-speed automatic transmission with SelectShift® capability and paddle activation
- Brakes – Power disc with Anti-Lock Brake System (ABS)
- Steering – Electric power-assisted (EPAS)
- Suspension – 4-wheel independent
- Torque Vectoring Control

Driver-Assist Technology

- Automatic headlights
- Hill start assist

Seating

- Front – Bucket seats with 4-way adjustable head restraints
- Front – Driver and passenger seat back map pockets
- Rear – 60/40 split fold-flat seat with manually reclining seat backs and folding centre armrest with 2 cupholders

Interior

- Below-floor Cargo Management System
- Cargo area tie-downs and hooks
- Cargo net
- Coat hooks – 2
- Console – Front centre with storage tray, armrest, powerpoint and 2 cupholders
- Console – Overhead with map lights and sunglasses holder
- Cupholders/beverage holders – 8
- Displays – Compass and outside temperature
- Door-sill scuff plates – Front and rear
- Grab handles – Front-passenger (1) and B-pillar (2)
- Ignition – Intelligent Access with push-button start
- Locks – Power door
- Power outlets – 12-volt powerpoints (4)
- Shifter knob – Leather-wrapped
- Steering wheel-mounted cruise and audio controls
- Visors – Adjustable driver and front-passenger with illuminated vanity mirrors
- Windows – Acoustic-laminate windshield
- Windows – Power with front one-touch-up/-down feature

Exterior

- Daytime running lights
- Easy Fuel® capless fuel filler
- Mirrors – Power sideview with integrated blind spot mirrors and manual fold-away design
- Rear spoiler – Body-colour
- Rear-window defroster
- Windows – Privacy glass (rear doors, rear quarter windows and liftgate window)
- Wipers – Front: speed-sensitive, variable-intermittent with washer; rear: 2-speed with washer

Safety & Security

- Airbags – Personal Safety System™ for driver and front passenger includes dual-stage front airbags,¹ safety belt pretensioners, safety belt energy management retractors, safety belt usage sensors, driver's seat position sensor, crash severity sensor, restraint control module and Front-Passenger Sensing System
- Airbag – Driver's knee¹
- Airbag – Glove-box-door-integrated knee¹
- Airbags – Front-seat side¹
- Airbags – Safety Canopy® System with side-curtain airbags¹ and rollover sensor
- AdvanceTrac® with RSC® (Roll Stability Control™) and Curve Control
- Battery saver with headlights-off delay
- Belt-Minder™ front safety belt reminder
- Child-safety rear door locks
- Front height-adjustable shoulder safety belts
- LATCH – Lower Anchors and Tether Anchors for Children (2 in rear outboard seating positions)
- MyKey®
- Rear view camera
- SecuriLock® Passive Anti-Theft Engine Immobilizer System
- SOS Post-Crash Alert System™
- Tire Pressure Monitoring System (excludes spare)

DIMENSIONS

Exterior mm (in.)	
Wheelbase	2,849 (112.2)
Length	4,779 (188.1)
Height	1,742 (68.6)
Width – Excluding mirrors	1,928 (75.9)
Width – Including mirrors	2,179 (85.8)
Width – Mirrors folded	1,992 (78.4)
Liftover height	755 (29.7)
Interior mm (in.)	
Head room	1,020 (40.2)/1,023 (40.3)
Leg room	1,081 (42.6) max./1,030 (40.6)
Hip room	1,420 (55.9)/1,461 (57.5)
Shoulder room	1,531 (60.3)/1,536 (60.5)

ENGINES/ESTIMATED FUEL CONSUMPTION RATINGS²

2.0L EcoBoost® 4-cylinder	
245 hp @ 5,500 rpm ³	
275 lb.-ft. of torque @ 3,000 rpm ³	
6-speed automatic with SelectShift capability	
FWD 11.5L/100 km city and 8.0L/100 km hwy (25 mpg city/35 hwy)	
AWD 11.9L/100 km city and 8.6L/100 km hwy (24 mpg city/33 hwy)	
2.0L EcoBoost 4-cylinder with Auto Start-Stop Technology	
245 hp @ 5,500 rpm ³	
275 lb.-ft. of torque @ 3,000 rpm ³	
6-speed automatic with SelectShift capability	
FWD 11.3L/100 km city and 8.0L/100 km hwy (25 mpg city/35 hwy)	
3.5L Ti-VCT V6	
280 hp @ 6,500 rpm	
250 lb.-ft. of torque @ 4,000 rpm	
6-speed automatic with SelectShift capability	
FWD 13.5L/100 km city and 9.1L/100 km hwy (21 mpg city/31 hwy)	
AWD 13.9L/100 km city and 10.0L/100 km hwy (20 mpg city/28 hwy)	
2.7L EcoBoost V6	
315 hp @ 4,750 rpm ³	
350 lb.-ft. of torque @ 2,750 rpm ³	
6-speed automatic with SelectShift capability	
AWD 13.8L/100 km city and 9.8L/100 km hwy (20 mpg city/29 hwy)	

¹Always wear your safety belt and secure children in the rear seat. ²Fuel consumption ratings based on Government of Canada approved test methods. Actual fuel consumption will vary for all ratings. ³Horsepower and torque ratings achieved with 93-octane fuel.



SE	SEL	TITANIUM	SPORT	
S	S	S		Mechanical
				2.0L EcoBoost® 4-cylinder engine with active grille shutters (includes Auto Start-Stop Technology on SE FWD)
			S	2.7L EcoBoost V6 engine with active grille shutters
	O	O		3.5L Ti-VCT V6 engine
			S	Active noise control
		P	P	Adaptive steering
S	S	S		Front-wheel drive (FWD)
O	O	O	S	All-wheel drive (AWD)
S	% _O	% _O	S	Engine block heater (standard on EcoBoost engines; optional on 3.5L engine)
			S	Suspension – Sport-tuned
				Driver-Assist Technology
		P	O	Adaptive cruise control & forward collision warning with brake support
	P	P	P	BLIS® (Blind Spot Information System) with cross-traffic alert
	S	S	S	Reverse Sensing System
S	S			SYNC® Voice Recognition Communications and Entertainment System with 4.2" colour LCD screen in centre stack, 911 Assist,® AppLink™ and 1 smart-charging USB port
	P	S	S	SYNC 3 which includes 8" colour LCD capacitive touchscreen in centre stack with swiping capability, 911 Assist, AppLink and 2 smart-charging USB ports
		P	P	Wipers – Rain-sensing windshield
				Seating
S				Front – 6-way manual driver’s seat and 4-way manual passenger seat
	S			Front – 10-way power driver’s seat and 6-way power passenger seat
		S	S	Front – 10-way power seats with driver’s memory feature
	S	S	S	Front – Heated
		P	P	Front – Heated and cooled
	S	S	S	Rear – EasyFold® seat back release
		P	P	Rear – Heated outboard seats
S				Trim – Cloth
	S			Trim – Unique cloth
	O	S		Trim – Leather-trimmed¹
			S	Trim – Leather-trimmed with perforated sueded cloth inserts

SE	SEL	TITANIUM	SPORT	
S	S			Interior
		S	S	AM/FM stereo/single-CD player with MP3 capability and 6 speakers
				Audio System from Sony® with 12 speakers and HD Radio™ Technology²
	P			Premium Audio System with 9 speakers
	S	S	S	SiriusXM® with 6-month prepaid subscription
	O	O	O	Voice-activated Navigation System with pinch-to-zoom capability (requires 201A on SEL)¹
S				Accents – Dark Ano Grey instrument panel appliqué
		S		Accents – Ano Grey instrument panel appliqué
		S		Accents – Mechanical Stripe aluminum instrument panel appliqué
			S	Accents – Brush weave aluminum instrument panel appliqué
			S	Ambient lighting
				Climate controls – Manual air conditioning
S		S	S	Climate controls – Dual-zone electronic automatic temperature control
		S	S	Door-sill scuff plates – Front, illuminated
O	O	O	O	Dual Headrest DVD by INVISION™¹,³
S	S	S		Flooring – Front and rear carpeted floor mats
			S	Flooring – Front and rear deluxe carpeted floor mats
O	O			Flooring – Front and rear floor liners
	P	S	S	Ignition – Remote Start System¹
	S	S	S	Mirror – Auto-dimming rearview
	O	P	P	Panoramic Vista Roof® (requires 201A on SEL)
			S	Pedals – Aluminum brake and accelerator covers
	P	P	P	Power outlet – 110-volt converter
S	S	S		Steering column – Manual-tilt/-telescoping
		P	P	Steering column – Power-tilt/-telescoping with memory
	S	S	S	Steering wheel – Leather-wrapped
	P	P	P	Steering wheel – Heated
	P	S	S	Universal garage door opener
		S	S	Windows – Acoustic-laminate front-door glass

SE	SEL	TITANIUM	SPORT	
S	S	S		Exterior
				Cladding – Black
			S	Cladding – Body-colour
S	S	S	S	Door handles – Body-colour
		S		Door handles – Body-colour with bright inserts
S	S	S		Exhaust tips – Dual brushed stainless steel
			S	Exhaust tips – Dual polished stainless steel and trapezoidal integrated into rear fascia
			S	Fascias – Unique lower front and rear
S	S	S		Grille – Bright
			S	Grille – Piano Black with Magnetic accents
		P	P	Headlights – High-intensity discharge (HID) with auto high beams
S	S	S	S	Headlights – Quad-beam halogen
			S	Headlights – Unique treatment
	S	S	S	Headlights – LED signature lighting
S	S			Liftgate – Manual
	P	S	S	Liftgate – Foot-activated hands-free power
S				Mirrors – Black, power sideview with integrated blind spot mirrors and manual fold-away design
		S		Mirrors – Body-colour, power, heated sideview with integrated LED turn signal indicators and security approach lights
			S	Mirrors – Body-colour, power, heated sideview with integrated LED turn signal indicators, security approach lights and memory feature
S			S	Mouldings – Black beltline
	S	S		Mouldings – Bright beltline
O	O			Roof rack – Black side rails¹
		O		Roof rack – Silver side rails¹
	S	S	S	SecuriCode™ keyless entry keypad
S	S			Tail lights – LED
		S	S	Tail lights – LED with light bar
				Safety & Security
O	O	O	O	Inflatable rear safety belts in outboard seating positions
	P	S	S	Perimeter alarm

SE	SEL	TITANIUM	SPORT	
	O			Equipment Groups & Packages
				Equipment Group 201A – SYNC 3 which includes 8" colour LCD capacitive touchscreen in centre stack with swiping capability, 911 Assist, AppLink and 2 smart-charging USB ports; Remote Start System; and Premium Audio System with 9 speakers
		O		Equipment Group 301A – Perforated leather-trimmed seats, heated and cooled front seats, heated rear outboard seats, BLIS (Blind Spot Information System) with cross-traffic alert, auto-dimming driver’s sideview mirror, and 110-volt converter power outlet + Cold Weather Package includes heated steering wheel, and front and rear floor liners
		O		Equipment Group 302A – Includes all content of 301A + Lane-Keeping System, Enhanced Active Park Assist System with Parallel Parking, Park Out Assist, Reverse Perpendicular Parking, and Forward and Side Sensing Systems, front 180-degree camera with washer, HID headlights with auto high beams, rain-sensing windshield wipers, and inflatable rear safety belts in outboard seating positions
			O	Equipment Group 401A – Adaptive steering, Lane-Keeping System, Enhanced Active Park Assist System with Parallel Parking, Park Out Assist, Reverse Perpendicular Parking, and Forward and Side Sensing Systems, front 180-degree camera with washer, HID headlights with auto high beams, rain-sensing windshield wipers, heated and cooled front seats, heated rear outboard seats, power-tilt/-telescoping steering column, BLIS (Blind Spot Information System) with cross-traffic alert, auto-dimming driver’s sideview mirror, and 110-volt converter power outlet + Cold Weather Package includes heated steering wheel, and front and rear floor liners
	O	O	O	Canadian Touring Package includes voice-activated Navigation System with pinch-to-zoom capability, and panoramic Vista Roof (requires 201A on SEL)
O	O	O	O	Cargo Accessories Package includes interior cargo cover, cargo area protector and rear bumper protector
	O	O		Class II Trailer Tow Prep Package includes trailer sway control
	O	O	O	Cold Weather Package includes heated steering wheel, and front and rear floor liners (requires 201A on SEL)
			O	Driver’s Package includes adaptive cruise control & forward collision warning with brake support, adaptive steering, and power-tilt/-telescoping steering column with memory (requires 301A or 302A)
			O	Driver’s Package 2 includes adaptive steering, and power-tilt/-telescoping steering column (content included on 401A)
	O			Technology Package¹ includes BLIS (Blind Spot Information System) with cross-traffic alert, auto-dimming driver’s sideview mirror, and 110-volt converter power outlet (requires 201A)
	O			Utility Package includes foot-activated hands-free power liftgate, perimeter alarm, and universal garage door opener (requires 201A)

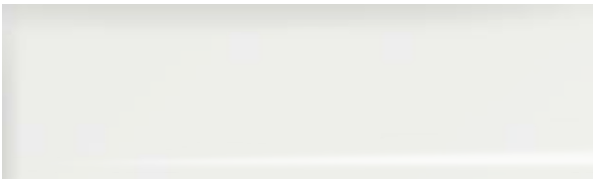
¹Restrictions may apply. See your Ford of Canada Dealer for details. ²HD Radio reception may not be available in all areas. ³Ford Licensed Accessory.

Android Auto, Google, Google Play and other marks are trademarks of Google Inc. Apple, Apple CarPlay, iPhone and Siri are trademarks of Apple Inc., registered in the U.S. and other countries. “HD Radio” is a proprietary trademark of iBiquity Digital Corporation. INVISION is a trademark of VOXX International Corporation. “SiriusXM,” the SiriusXM logo, channel names and logos are trademarks of SiriusXM Radio Inc. and are used under licence. Sony is a registered trademark of the Sony Corporation. THULE is a registered trademark of Thule Sweden AB. Wi-Fi® is a registered trademark of the Wi-Fi Alliance.® All other trademarks, service marks, images and logos are property of their respective owners and are displayed in this publication with permission. All rights reserved.

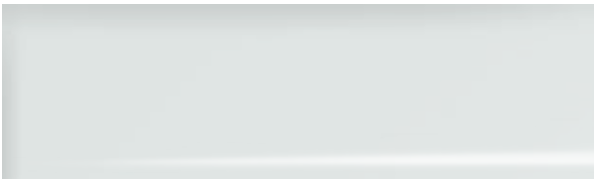
Comparisons based on competitive models (class is Midsize Utilities based on Ford segmentation), publicly available information and Ford certification data at the time of printing. Some features discussed may be optional. Vehicles may be shown with optional equipment. Features may be offered only in combination with other options or subject to additional ordering requirements or limitations. Dimensions shown may vary due to optional features and/or production variability. Information is provided on an “as is” basis and could include technical, typographical or other errors. Ford Motor Company of Canada, Limited, makes no warranties, representations, or guarantees of any kind, express or implied, including but not limited to, accuracy, currency, or completeness, the operation of the information, materials, content, availability, and products. Your Ford of Canada Dealer is your best source for up-to-date information. Ford Motor Company of Canada, Limited, reserves the right to change product specifications, pricing and equipment at any time without incurring obligations.



Exterior	SE	SEL	TITANIUM	SPORT
	White Platinum Metallic Tri-coat ¹	3 4 5 6	6 7 8 9 10	11
	Oxford White	1 2	3 4 5 6	
	Ingot Silver Metallic	1 2	3 4 5 6	11
	White Gold Metallic	1 2	3 4 5 6	6 7 8 10
	Canyon Ridge Metallic		3 4 5 6	6 7 8 9 10 11



White Platinum Metallic Tri-coat



Oxford White



Ingot Silver Metallic



White Gold Metallic



Canyon Ridge Metallic



Ruby Red Metallic Tinted Clearcoat



Burgundy Velvet Metallic Tinted Clearcoat



Blue Jeans Metallic



Magnetic Metallic



Shadow Black

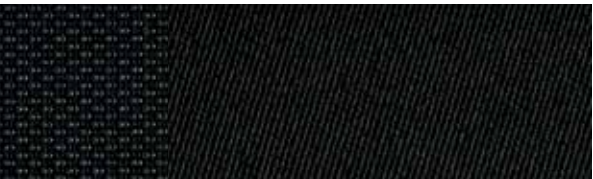
Exterior	SE	SEL	TITANIUM	SPORT
	Ruby Red Metallic Tinted Clearcoat ¹	3 4 5 6	6 7 8 10	11
	Burgundy Velvet Metallic Tinted Clearcoat ¹	3 4 5 6	6 7 8 9 10	11
	Blue Jeans Metallic	1 2	3 4 5 6	6 7 8 10
	Magnetic Metallic	1 2	3 4 5 6	6 7 8 9 10
	Shadow Black	1 2	3 4 5 6	6 7 8 9 10 11

5,6: Optional on SEL; requires 201A 8,9,10: Requires 301A or 302A



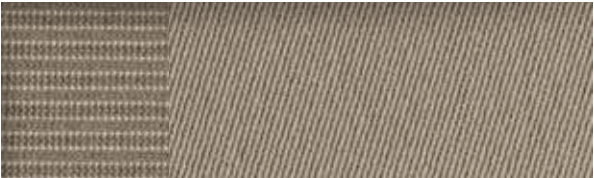
Dune Cloth

1



Ebony Cloth

2



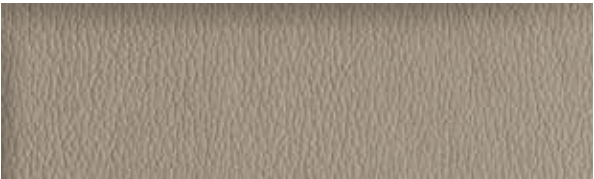
Unique Dune Cloth

3



Unique Ebony Cloth

4



Dune Leather

5



Ebony Leather

6



Ceramic Leather

7



Ceramic Leather with Perforated Inserts

8



Cognac Leather with Perforated Inserts

9



Ebony Leather with Perforated Inserts

10



Ebony Leather with Perforated Sueded Cloth Inserts

11

Colours are representative only. See your Ford of Canada Dealer for actual paint/trim options. ¹Additional charge.



SE in Magnetic Metallic accessorized with smoked side window deflectors,¹ Aeroskin™ hood protector by Lund^{®1}, front and rear moulded splash guards, keyless entry keypad, and roof-mounted crossbars and cargo box by THULE^{®1,2}

Exterior
Full vehicle cover ¹
Hood protector ¹
Racks and carriers ¹
Rear bumper protector (B)
Side window deflectors ¹ (A)
Splash guards
Sportz [®] tent ¹
Trailer towing accessories
Wheel lock kit

Interior
Ash cup/coin holders
Cargo area protector (B)
Cargo organizers and protectors
First aid and roadside assistance kits ¹
Floor liners (C)
In-vehicle safe ¹
Interior cargo cover (B)
Tablet cradle ¹

Electronics
Keyless entry keypad
Remote Access (D)
Remote start systems
Vehicle Security System

Ford Protect plans. Help protect your investment and add to your peace of mind by complementing your vehicle purchase or lease with a Ford Protect plan. Ford Protect offers you protection against unexpected repair costs after your Basic Coverage in the New Vehicle Limited Warranty expires by covering many vehicle components. Enjoy the drive even more by complementing your Ford Protect plan with a prepaid maintenance plan, which covers all required scheduled maintenance for your vehicle, plus eight wear items. Ask your dealer for a Ford Protect plan, the only service contract backed exclusively by Ford and honoured at all Ford Lincoln dealerships.

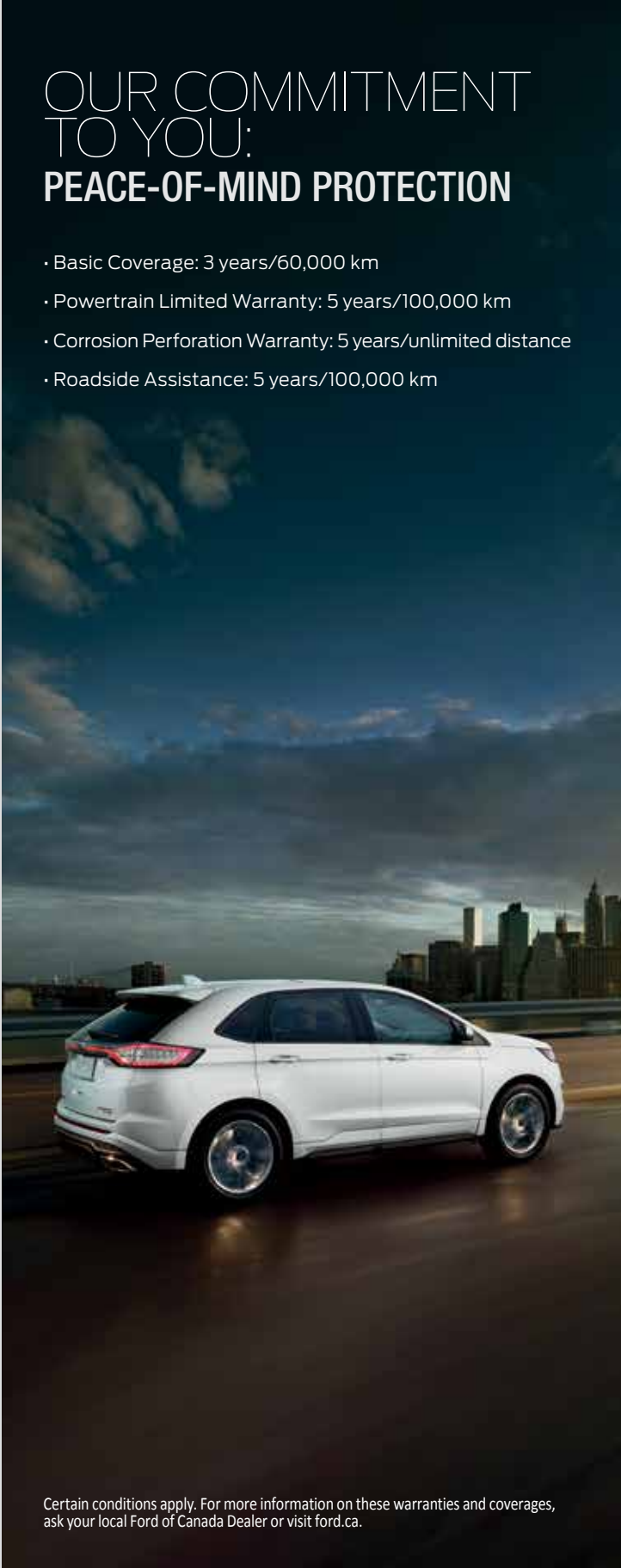
Ford Credit. Get the ride you want. Whether you plan to lease or finance, you'll find the choices that are right for you at Ford Credit. Ask your local Ford of Canada Dealer for details or check us out at fordcredit.ca.

Ford Original Accessories that are properly installed by the authorized Dealer that sold the accessory will be warranted for whichever provides you the greatest benefit: 24 months/unlimited distance, or the remainder of your 3-year/60,000-km New Vehicle Limited Warranty. Ford Licensed Accessories (FLA) are warranted by the accessory manufacturer's warranty. FLA are designed and developed by the accessory manufacturer and have not been designed or tested to Ford Motor Company engineering requirements. Contact your local Ford of Canada Dealer for details and/or a copy of all limited warranties.

For prompt, courteous answers to your questions:
Ford Customer Relationship Centre 1-800-565-3673;
Ford Credit Customer Service Centre 1-877-636-7346.



¹Ford Licensed Accessory. ²Consult owner's manual for details on roof rack weight limits.



OUR COMMITMENT TO YOU: PEACE-OF-MIND PROTECTION

- Basic Coverage: 3 years/60,000 km
- Powertrain Limited Warranty: 5 years/100,000 km
- Corrosion Perforation Warranty: 5 years/unlimited distance
- Roadside Assistance: 5 years/100,000 km

Certain conditions apply. For more information on these warranties and coverages, ask your local Ford of Canada Dealer or visit ford.ca.